



INIA-Neuroimmune RSA Satellite Meeting

Saturday June 24, 2023
Hyatt Regency, Bellevue, WA

The Integrative Neuroscience Initiative on Alcoholism (INIA) is a consortium funded by the National Institute of Alcohol Abuse and Alcoholism at the National Institutes of Health. INIA-Neuroimmune is one of two INIA consortia with researchers across the US and France who study immune pathways in the brain, combining novel genomic and systems-level analyses to identify new strategies for treatment of alcohol use disorder.

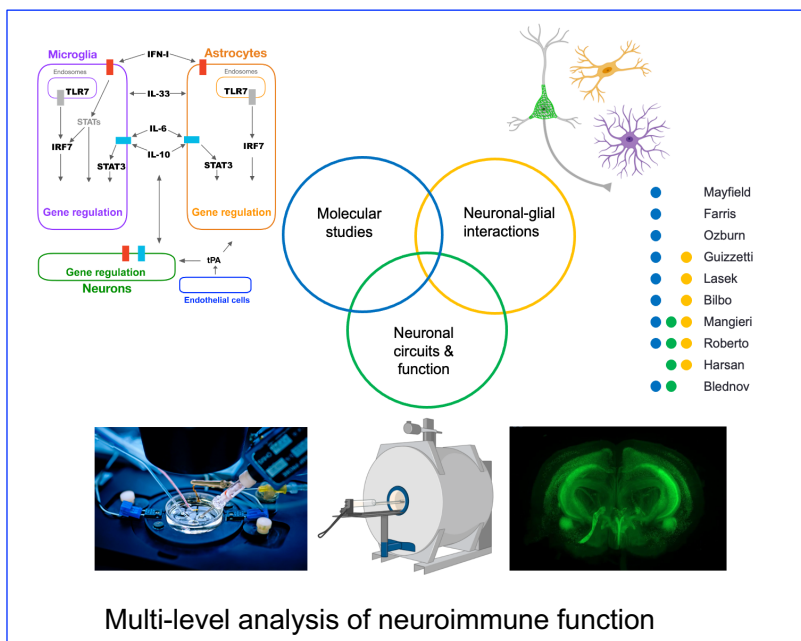
Please check the RSA website for finalized room locations: [46th Annual RSA Scientific Meeting](#)

8:00 am – 12:00 pm

Genetic changes and adaptations in neuroimmune pathways that promote and sustain excessive drinking.

Data presentations from INIA-Neuroimmune projects will highlight investigations into:

- ◆ Neuroimmune genomics
- ◆ Neurons, glia, & the extracellular matrix
- ◆ Neuroimmune signal transduction
- ◆ Brain connectivity networks



1:00 pm – 3:00 pm

INIA approaches to data integration (combined INIA-Stress and INIA-Neuroimmune presentation)

Review of data repositories and computational efforts at providing the alcohol research field with resources and tools to interrogate large data sets in integrative neuroscience.

3:00 pm – 4:30 pm

INIA Consortia Junior Scientists Poster Presentation

Join us for science and refreshments and meet a new generation of alcohol neuroscientists.

Please RSVP by May 1st

Please use this link and indicate if you plan to attend in person or virtually. Zoom connection information will be sent to virtual attendees prior to the meeting.

https://utexas.qualtrics.com/jfe/form/SV_9RIGZKbIBY3DqaG

For more information on the INIA-Neuroimmune Consortium please visit:

<https://sites.cns.utexas.edu/inia-neuroimmune/home>